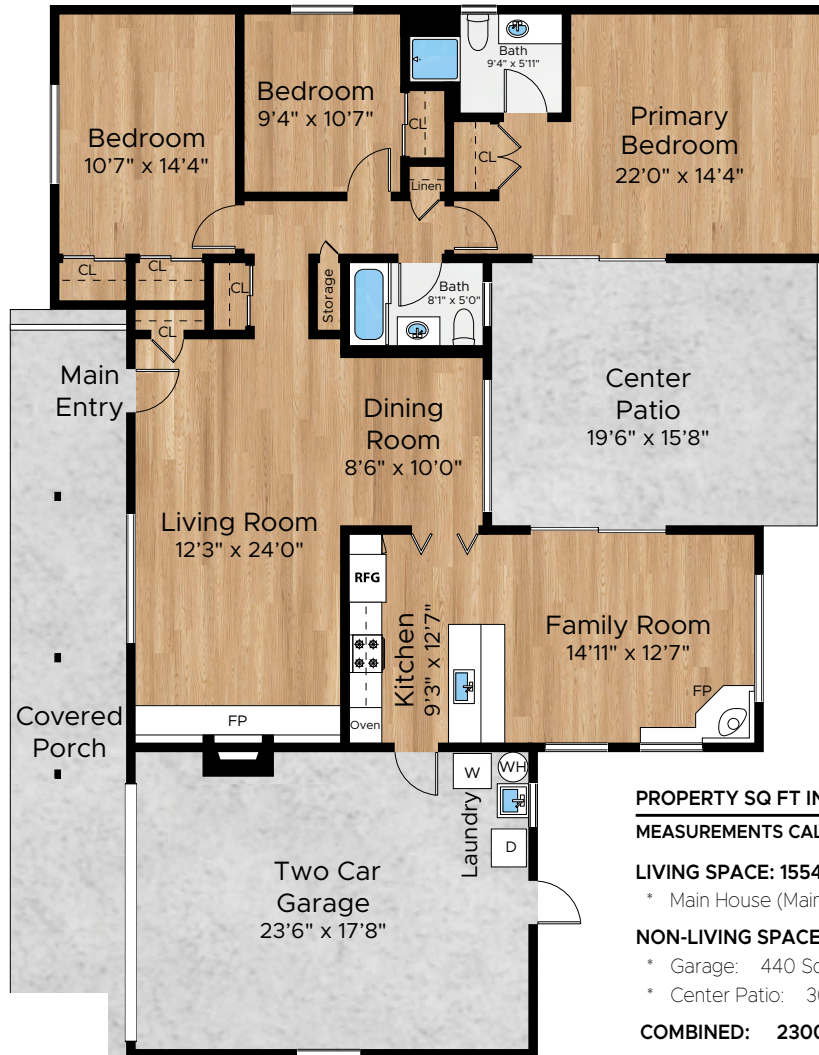


304 RICARDO ROAD

MILL VALLEY



PRESENTED BY THE MARIN GROUP
SUSAN HEWITT + C. J. NAKAGAWA

Lic.# 00996144, 01913564



Rendering by Open Homes Photography. All measurements are approximate and may not be exact. Do not rely on the accuracy of this floor plan when determining the price of a property or making decisions regarding buying or selling properties without independent verification.

Sotheby's International Realty and the Sotheby's International Realty logo are registered (or unregistered) service marks used with permission. Sotheby's International Realty Affiliates LLC fully supports the principles of the Fair Housing Act and the Equal Opportunity Act. Each Office Is Independently Owned And Operated. If your property is listed with a real estate broker, please disregard. It is not our intention to solicit the offerings of other real estate brokers. We are happy to work with them and cooperate fully.